



RUBINETTO IN BRONZO A MASCHIO ACQUEDOTTO DI POMPEI
BRONZE PLUG VALVE POMPEII AQUEDUCT



NOI ITALIANI COSTRUIAMO VALVOLE DA OLTRE 2000 ANNI
WE, ITALIANS, MANUFACTURE VALVES FOR OVER 2000 YEARS

CHI SIAMO

O.P.M.ITALIA è una società leader di mercato, fondata nel 1997 da persone con già una lunga esperienza in aziende di primaria importanza, operante nel settore del “piping”, specializzata in valvole di controllo dei fluidi e accessori, utilizzate da importanti società di ingegneria, nel settore petrolchimico, nell’industria chimica e nel settore della produzione e distribuzione del gas e dell’energia.

L’esperienza maturata permette a O.P.M. ITALIA di perfezionare e focalizzare la propria attività sulla produzione e fornitura in tempi brevi – anche grazie a un importante stock – di prodotti quali:

- Valvole in acciaio forgiato e acciaio fuso a saracinesca, globo, di ritegno
- Valvole a sfera, tipo Floating, Trunnion, Top Entry, DBB e altro ancora
- Filtri a “Y”, “Tee”, Basket, Temporane, prodotti – laddove richiesto – anche su disegni specifici del cliente
- Valvole a farfalla e Rubinetti a Maschio
- Componentistica legata al “piping”, come Spie Visive, Scaricatori di Condensa o Manifolds.

Inoltre, attraverso strutture collegate e con l’ausilio di personale qualificato, si forniscono servizi di ispezione e test presenziati su tutti i tipi di materiali.

L’attività svolta e la politica commerciale di O.P.M. ITALIA è da sempre volta alla soddisfazione del cliente attraverso la fornitura di un prodotto di alta qualità – costantemente monitorato – e di un servizio completo ed efficiente, garantito da un supporto tecnico e commerciale di primissimo livello.

ABOUT US

O.P.M. ITALIA is a leading Piping sector Company, established in 1997 by engineers with vast experience in manufacturing companies, and a high level of specialization in fluid control valves and accessories. Our main clients are Major Engineering Companies, in Oil, Petro-Chemical, Chemical Industry, Power plant and Gas distribution sectors.

This long experience allows O.P.M. ITALIA to tailor and focus our activity on the manufacture and short lead-time supply of a wide range of valve and piping products.

This is in large part down to our huge investment in our stockholding of the following products:

- Forged steel and Cast steel Gate, Globe, Check Valves
- Floating, Trunnion, Top Entry, DBB Ball Valves
- “Y”, “Tee”, Basket, Temporary Strainer, manufactured – if required – to specific customer drawings
- Butterfly Valves and Plug Valves
- Piping components, such as Sight Glasses, Steam Traps or Manifolds.

Additionally, through our in-house skilled personnel and external laboratories and testing companies, we can provide most customers required Inspection and tests for all our products.

O.P.M. ITALIA’s policy, is first and foremost - Customer Satisfaction.

This is achieved by the supply of a high quality product – continuously monitored using our ISO procedures – and backed up by our quality Technical department, and an efficient and friendly Commercial support.

CERTIFICATI
CERTIFICATIONS

COSTRUZIONE SECONDO
CONSTRUCTION ACCORDING TO

ALCUNE APPROVAZIONI
SOME VENDOR'S LIST APPROVALS

RIVENDITORI E DISTRIBUTORI IN
RETAILERS AND DISTRIBUTORS IN

EN-ISO 10204.3.1
PED DIRECTIVE (module H) 97/23/EC
ISO 9001:2008
ISO 14001:2004

ANSI/ASME B16.34
API 6A
API 6D
API 594
API 598
API 599
API 600
API 602
API 606
API 607
API 609
API 623
BS 1868
BS 1873
BS 5351
BS 5352
GOST "R"

AGIP - ITALIA / ITALY
ENEL - ITALIA / ITALY
SOLVAY - ITALIA / ITALY
VERSALIS - ITALIA / ITALY
NIGC - IRAN / IRAN
SCOP - IRAQ / IRAQ
ENPPI - EGITTO / EGYPT
KHALDA PETROLEUM - EGITTO / EGYPT
SONATRACH - ALGERIA / ALGERIA
INA - SERBIA/CROAZIA / SERBIA/CROATIA
GAZPROM - RUSSIA / RUSSIA
LUCKOIL - RUSSIA / RUSSIA

EGITTO / EGYPT
CROAZIA / CROATIA
FRANCIA / FRANCE
GERMANIA / GERMANY
INGHILTERRA / U.K.
SPAGNA / SPAIN
PORTOGALLO / PORTUGAL
PAESI BASSI / THE NETHERLANDS
RUSSIA / RUSSIA
EMIRATI ARABI / U.A.E.
TURCHIA / TURKEY
AMERICA LATINA / LATIN AMERICA
SUD-EST ASIATICO / SOUTH-EAST ASIA
SUDAFRICA / SOUTH AFRICA
MAGHREB / MAGHREB

VALVOLE FORGIATE

Saracinesche pass. Rid./Tot. BB/WB
Valvole a globo pass. Rid./Tot. BB/WB
Valvole a globo a "Y" WB
Valvole ritegno pass. Rid./Tot. BB/WB
Valvole ritegno a "Y" WB

Diametri
da 1/4" a 2"

Classi
da 600 a 4500 lbs

Connessioni
A tasca da saldare Asme B16.11
Filettate Asme B1.20.1
Da saldare di testa Asme B16.25

Materiali
Acciai al Carbonio
Acciai Inox
Acciai legati
Acciai "esotici"

Manovra
Volantino/gear
Attuatori elettrici/pneumatici

FORGED VALVES

Gate valves Red. and Full bore BB/WB
Globe valves Red. and Full bore BB/WB
"Y" Globe valves WB
Check valves BB/WB
"Y" Check valves WB

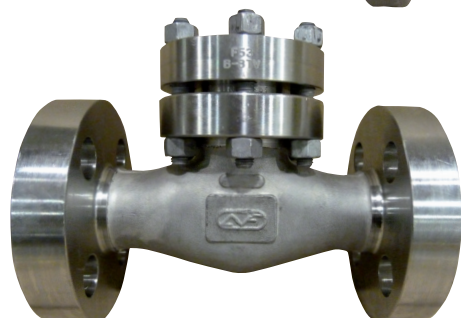
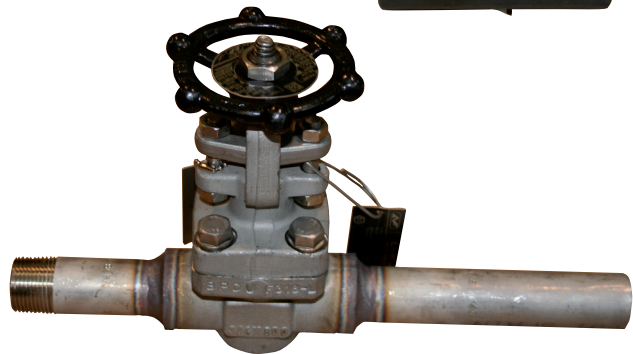
Diameters
From 1/4" to 2"

Classes
From 600 to 4500 lbs

Connections
SW to Asme B16.11
Threaded to Asme B1.20.1
Butt weld to Asme B16.25

Materials
Carbon steels
Stainless steels
Alloy steels
"Exotic" steels

Operated by
Handwheel/Gear
Electric/Pneumatic Actuators



VALVOLE FUSE

Saracinesche BB e Pressure Seal
Valvole a globo BB e Pressure Seal
Valvole ritegno a battente BB e Press. Seal
Valvole ritegno a Clapet Wafer
Valvole ritegno a Disco Wafer
Valvole ritegno "Tilting Disc"
Valvole ritegno "Dual Plate"

Diametri
da 2" a 42"

Classi
da 150 a 2500 lbs

Connessioni
a gradino RF Asme B16.5 / ASME B16.47
con Ring Joint
da saldare di testa Asme B16.25
ad Incamerature varie

Materiali
Acciai al Carbonio
Acciai Inox
Acciai legati
Acciai "esotici"

Manovra (Sarac. e Globo)
Volantino/Gear
Attuatori Elettrici/Pneumatici

CAST VALVES

Gate BB and Pressure Seal
Globe BB and Pressure Seal
Swing Check BB and Pressure Seal
Swing Wafer Check
Disc Wafer Check
"Tilting Disc" Wafer
"Dual Plate" Check

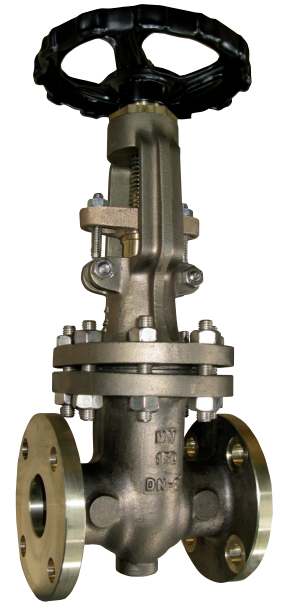
Diameters
From 2" to 42"

Classes
From 150 to 2500 lbs

Connections
Raised face to Asme B16.5 / ASME B16.47
with Ring Joint
Butt weld to Asme B16.25
with Groove and Tongue

Materials
Carbon steels
Stainless steels
Alloy steels
"Exotic steels"

Operated by (Gate and Globe)
Handwheel/Gear
Electric/Pneumatic Actuators



VALVOLE A SFERA FORGIATE E FUSE

Flottanti pass. Ridotto

Flottanti pass. Totale

"Trunnion"

Top Entry

A Tre vie

Wafer

DBB - Double Block e Bleed

Tenute

Morbide

Metalliche

Diametri

da 1/2" a 56"

Classi

da 150 a 2500 lbs

Connessioni

Filettate gas/NPT Asme B1.20.1

A tasca da saldare Asme B16.11

Da saldare di testa Asme B16.25

A gradino RF Asme B16.5 / Asme B16.47

Ad incamerature varie

Materiali

Acciai al Carbonio

Acciai Inox

Acciai legati

Acciai "esotici"

Manovra

a leva

riduttore

attuatori elettrici/pneumatici

FORGED & CAST STEEL BALL VALVES

Floating type Red./Full bore

"Trunnion" type

Top Entry type

Three way type

Wafer type

DBB - Double Blocked and Bleed

Seals

Soft

Metallic

Diameters

From 1/2" to 56"

Classes

From 150 to 2500 lbs

Connections

Threaded gas and NPT to Asme B1.20.1

SW to Asme B16.11

Butt weld to Asme B16.25

Raised face to Asme B16.5 / Asme B16.47

with Ring Joint

with Groove and Tongue

Materials

Carbon steels

Stainless steels

Alloy steels

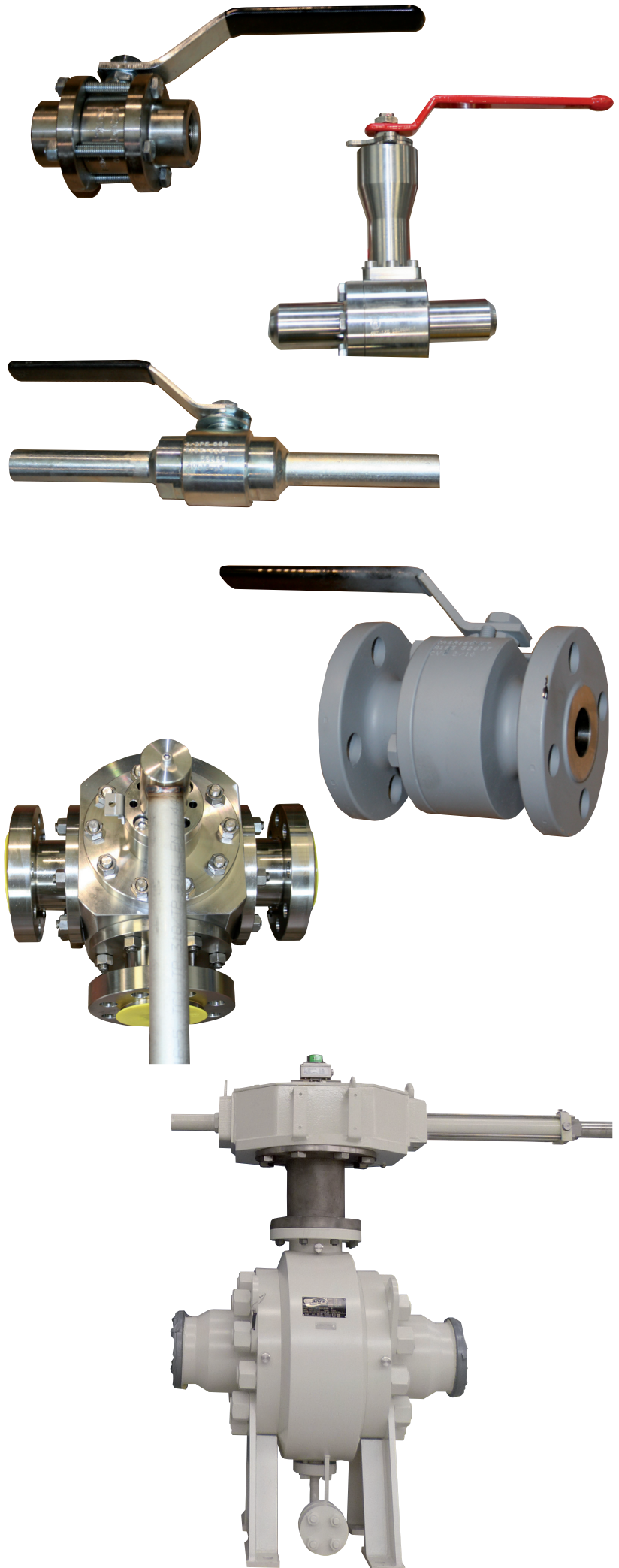
"Exotic" steels

Operated by

Handle

Gear

Electric/Pneumatic Actuators



FILTRI

A "Y"
A "T"
TEMPORANEI
A CESTELLO "SIMPLEX"

Diametri

da 1/4" a 2" tipo a "Y" forgiati
da 1/2" a 24" fusi
da 2" a 52" temporanei
da 2" a 24" a "T"

Classi

da 150 a 2500 lbs tipo a "Y"
da 150 a 1500 temporanei - a "T" - a cestello

STRAINERS AND FILTERS

"Y" type
TEMPORARY type
"TEE" type
SIMPLEX BASKET type

Diameters

from 1/4" to 2" forged "Y" type
from 1/2" to 24" cast steel type
from 2" to 52" temporary type
from 2" to 24" "T" type

Classes

from 150 to 2500 lbs "Y" type
from 150 to 1500 lbs temporary, "T", basket types

SPIE VISIVE

FORGIATE
FUUSE
ELETTROSALDATE

Diametri

da 1/2" a 2" forgiate
da 1/2" a 8" fuse
da 10" a 16" elettrosaldate

Classi

da 150 a 600 lbs

Connessioni

SW - filettate - flangiate - BW

Note

Tipo con 1, 2 o 4 vetri
Vetri temperati o borosilicato
Passaggio interno libero o con evidenziatori
per controllo fluidi
Costruzione anche con tubo di vetro

SIGHT GLASSES

FORGED type
CAST STEEL type
ELECTRIC WELDED type

Diameters

From 1/2" to 2" forged type
From 1/2" to 8" cast steel type
From 10" to 16" electric welded type

Classes

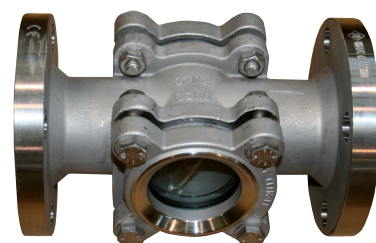
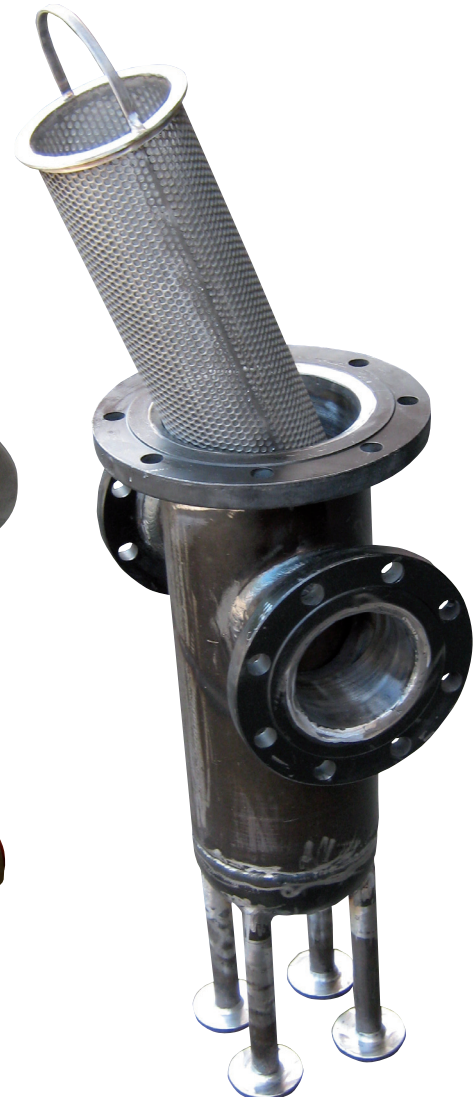
From 150 to 600 lbs

Connections

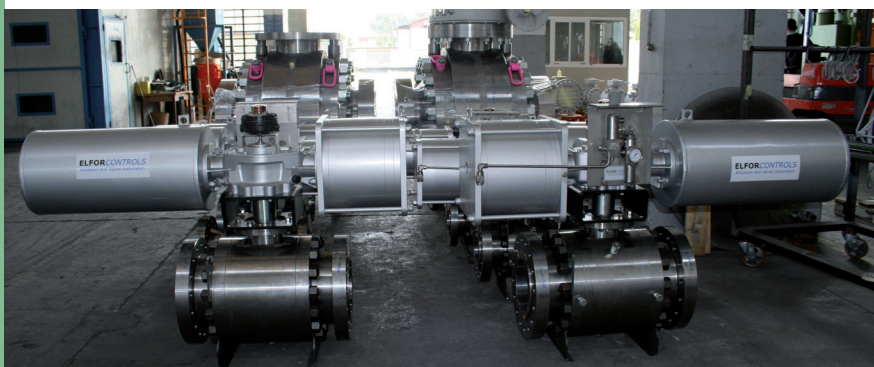
SW - threaded - flanged - BW

Notes

With 1, 2 or 4 glasses
Temperated or borosilicate glasses
Free inside passage or with flow indicator
for fluid control
Glass tube construction too



ESECUZIONI SPECIALI
SPECIAL CONSTRUCTIONS



PER COMPLETAMENTO "PACCHETTI" POSSIAMO FORNIRE VALVOLE A FARFALLA A TENUTA MORBIDA O METALLICA - RUBINETTI A MASCHIO - INDICATORI DI LIVELLO A VETRO O MAGNETICI - SCARICATORI DI CONDENZA E TUTTO QUANTO INERENTE AL PIPING QUALI TUBI, FLANGE, GUARNIZIONI, TIRANTI, RACCORDI.
TO COMPLETE PACKAGES, WE ARE ABLE TO SUPPLY SOFT SEATED AND METAL TO METAL BUTTERFLY VALVES - PLUG VALVES - GLASS OR MAGNETIC TYPE LEVEL GAUGES - STEAM TRAPS AND ANY KIND OF ACCESSORIES FOR PIPING, LIKE PIPES, FLANGES, GASKETS, STUDBOLTS/NUTS OR FITTINGS TOO.



O.P.M. ITALIA S.r.l.

Cap. sociale / Registered Capital: 115.000 I.V. P. IVA / Vat Number: 12135310154
Via Murri, 24 int. 40 20013 Magenta, Milano - Italy Phone: +39 0297003091 Fax: +39 0297290132
web: www.opmitalia.com e-mail: info@opmitalia.com